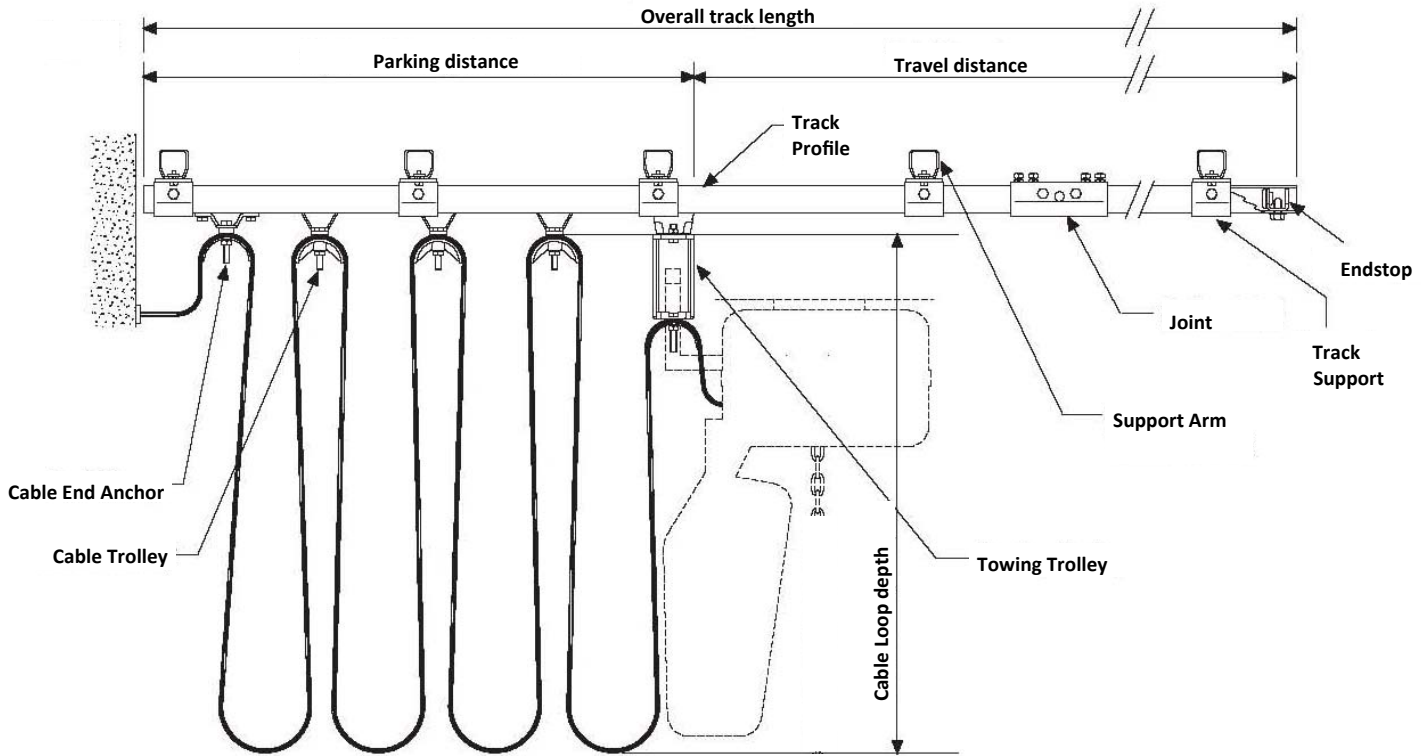
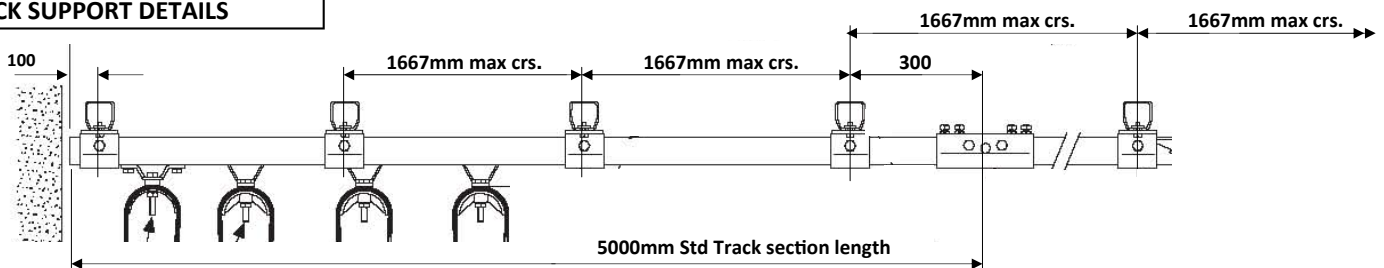


C-RAIL FESTOON TRACK - CABLE & HOSE CARRYING SYSTEMS

FESTOON TRACK ASSEMBLY



TRACK SUPPORT DETAILS



SYSTEM CALCULATIONS

Cable Length

For correct installation the cable should never be pulled tight, we therefore recommend a 20% surplus be added to the overall track length, the calculation for cable length is shown below :-

Total cable length = (overall track length x 1.2) + required tail lengths.

Example

Overall track length = 15m

Tail at Hoist end = 0.50m

Tail at Feed end = 3m

Total cable length = (15 x 1.2) + 0.5 + 3 = 21.5m

Number of Trolleys

The number of trolleys required in the system is determined by the cable loop depth, so using the information above we can calculate the number of trolleys Required as follows :

No. of trolleys = [(overall track length x 1.2) / (2 x Loop depth)] - 1

Example

Overall track length = 15m

Loop depth = 0.75m

No. of Trolleys = [(15 x 1.2) / (2 x 0.75)] - 1 = 11

In addition you require 1 x Tow Trolley & 1 X End Anchor

System (Track size) selection

System 2331 - max cable stack = 58mm x 20mm, max trolley load = 20kg

System 2500 - max cable stack = 115mm x 50mm, max trolley load = 40kg

Trolley selection

The correct trolleys should be selected by referring to the maximum cable stack, and maximum cable weight information shown on the trolley information on the following pages, maximum recommended cable stacks are calculated to ensure that trolley bodies will come together before the loops of cable clash or foul each other.

Parking Distance

The parking distance is the section of track taken up by the trolleys when collected together at the end of the system, this is a simple calculation determined by the number and type of trolleys.

Example

Overall track length = 15m

Loop depth = 0.75m

Trolley type 2401-5 (80mm body length)

Tow trolley 2401-6 (80mm body length)

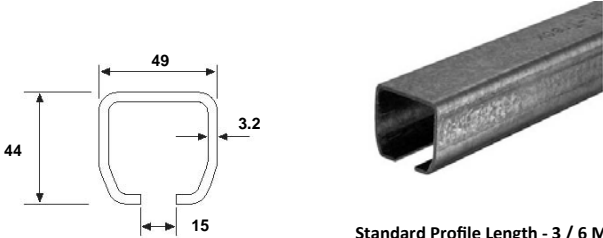
Cable end anchor 2331-2 (80mm body length)

No. of trolleys = 11

Parking distance = 80 + (11 x 80) + 80 = 1040mm

TRACK PROFILE

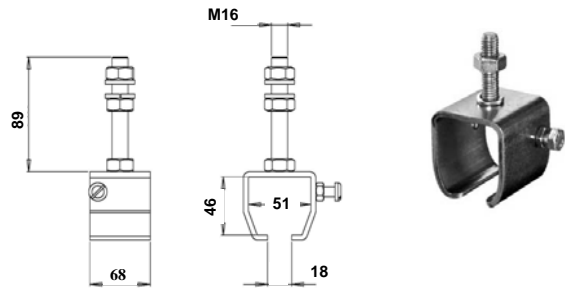
Part No.	Part Code	Standard Length	Weight kg/m	Finish
0500401200	SL 400	3m / 6m		Galvanised Steel



Standard Profile Length - 3 / 6 Meters

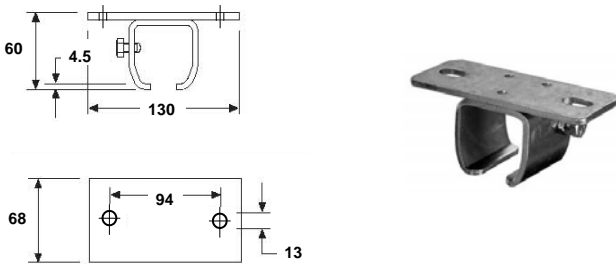
SINGLE STUD SUPPORT

Part No.	Part Code	Finish	For use with
0500402700	SL 401	Zinc Plated Steel	Galv. Steel track



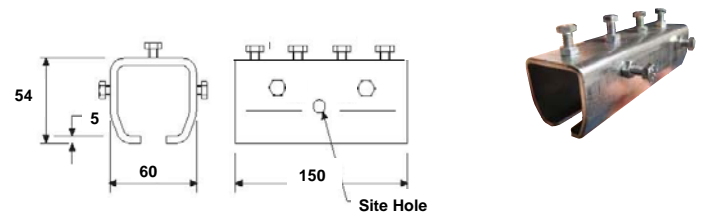
CEILING SUPPORT

Part No.	Part Code	Finish	For use with
0500402600	SL 402	Zinc Plated Steel	Galv. Steel track



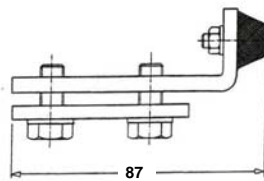
TRACK JOINT

Part No.	Part Code	Finish	For use with
0500403600	SL 403	Zinc Plated Steel	Galv. Steel track



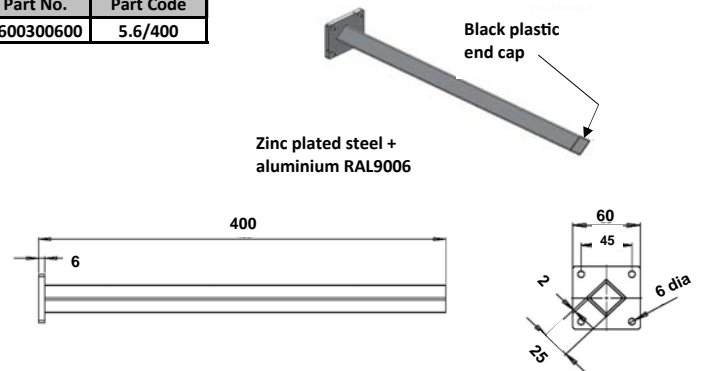
ENDSTOP

Part No.	Part Code	Finish	For use with
0500404100	SL 404	Zinc Plated Steel	Galv. Steel track



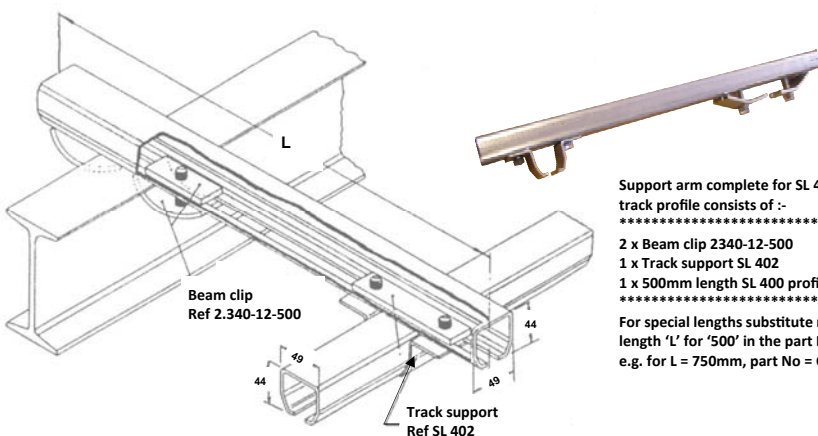
TOWING ARM

Part No.	Part Code
0600300600	5.6/400



SUPPORT ARM

Part No.	Part Code	Finish	For use with
	CM-4-500	Zinc Plated Steel	Galvanised Steel track



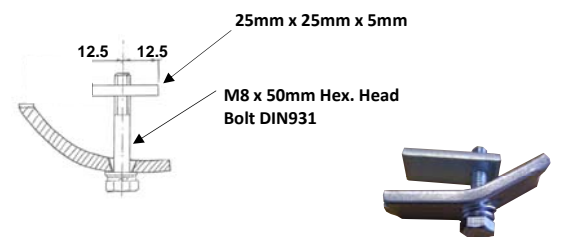
Support arm complete for SL 400 track profile consists of :-

 2 x Beam clip 2340-12-500
 1 x Track support SL 402
 1 x 500mm length SL 400 profile

 For special lengths substitute req'd length 'L' for '500' in the part No.
 e.g. for L = 750mm, part No = CM-4-750

BEAM CLIP

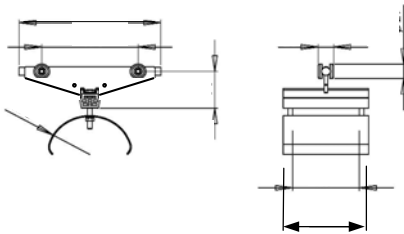
Part No.	Part Code	Finish	For use with
0500700800	2340-12-500	Zinc Plated Steel	Galv. Steel track



For use with support arms from 2500-1 track profile (see part No. CM-3)

CABLE TROLLEY

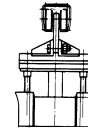
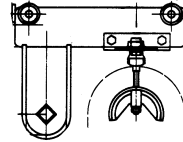
Part No.	Part Code	Body	Wheels & Axles	Cable Clip	For use with
0500408510	SL400 - L11	Zinc Plated Steel	Zinc Plated Steel	Galvanised Steel	Galvanised Steel track



SL400 - L11 Trolley
Max cable stack = 100 x 40mm

TOW TROLLEY

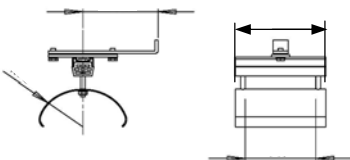
Part No.	Part Code	Body	Wheels & Axles	Cable Clip	For use with
0500413710	SL400 - M11	Zinc Plated Steel	Zinc Plated Steel	Galvanised Steel	Galvanised Steel track



SL400 - M11 Tow Trolley
Max cable stack = 100 x 40mm

CABLE END ANCHOR

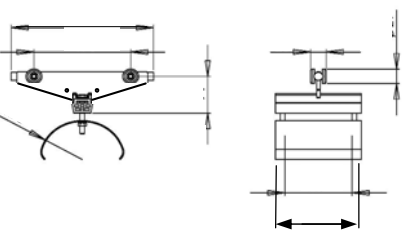
Part No.	Part Code	Body	Cable Clip	For use with
0500408610	SL400 - K11	Zinc Plated Steel	Galvanised Steel	Galvanised Steel track



SL400 - K11 Anchor
Max cable stack = 100 x 40mm

CABLE TROLLEY

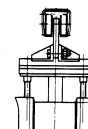
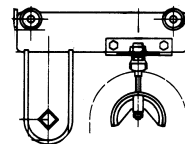
Part No.	Part Code	Body	Wheels & Axles	Cable Clip	For use with
	SL400 - L10	Zinc Plated Steel	Zinc Plated Steel	Galvanised Steel	Galvanised Steel track



SL400 - L10 Trolley
Max cable stack = 55 x 40mm

TOW TROLLEY

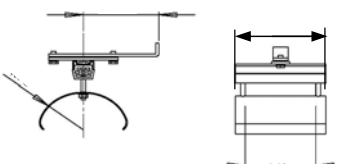
Part No.	Part Code	Body	Wheels & Axles	Cable Clip	For use with
	SL400 - M10	Zinc Plated Steel	Zinc Plated Steel	Galvanised Steel	Galvanised Steel track



SL400 - M10 Tow Trolley
Max cable stack = 55 x 40mm

CABLE END ANCHOR

Part No.	Part Code	Body	Cable Clip	For use with
	SL400 - K10	Zinc Plated Steel	Galvanised Steel	Galvanised Steel track



SL400 - K10 End Anchor
Max cable stack = 55 x 40mm
