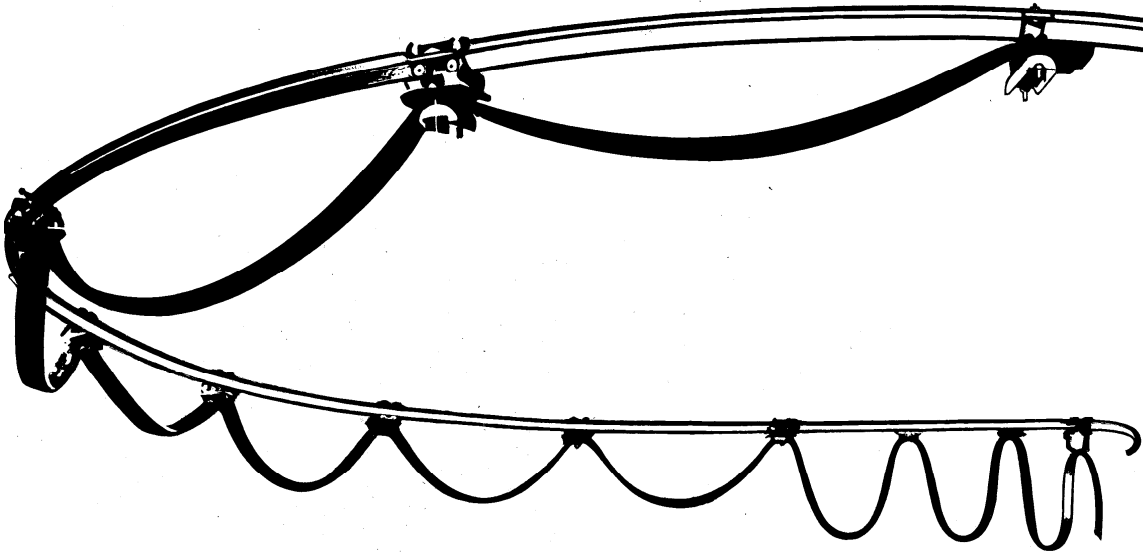


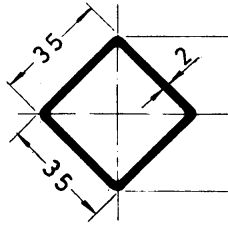
Diamond Track Festoon Cable Systems

These systems are the ideal solution for applications involving curved elements, the trolleys are guided on all 4 sides of the profile preventing them from jamming as they negotiate the curves.

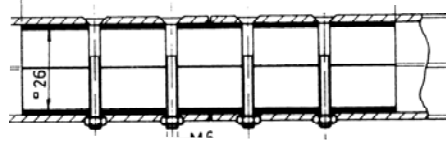
**Diamond Track Festoon Cable Systems**

Are also ideal for dusty applications. The sloping sides of the profile prevent the build up of dust. For clean environment applications such as food factories, the totally enclosed diamond profile can be easily washed down.

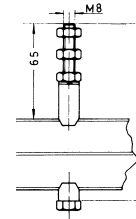
FIXED COMPONENTS



2.307-1 Profile
5000mm Lengths
Finish : Galvanised Steel

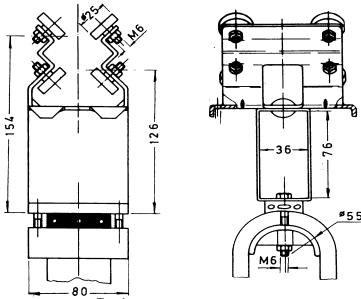


2.307-3 Joint
c/w Nuts & Bolts
Finish : Galvanised Steel

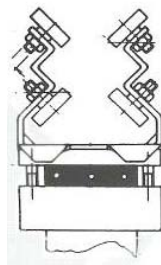


2.307-4 Support
c/w Nuts & Bolts
Finish : Galvanised Steel

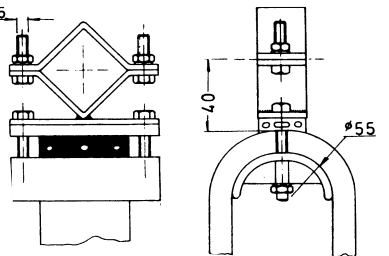
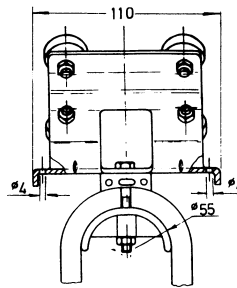
TROLLEYS



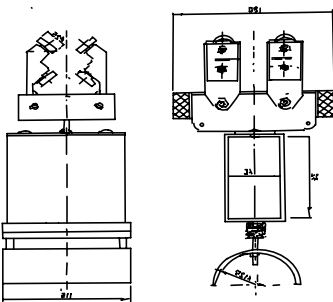
2.307-6 Towing Trolley
Finish : Galvanised Steel



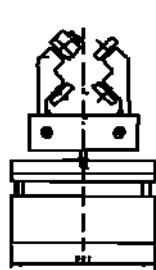
2.307-5 Intermediate Trolley
Finish : Galvanised Steel



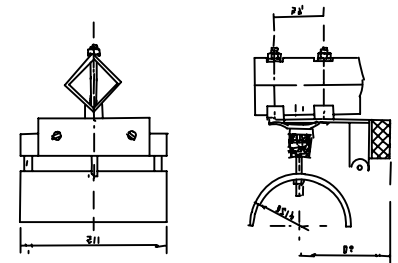
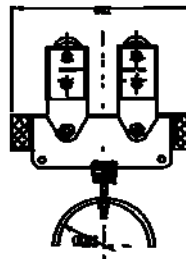
2.307-2 End Anchor
Finish : Galvanised Steel



2.307(180)-PL120-6 Towing Trolley
Finish : Galvanised Steel / Aluminium



2.307(180)-PL120-5 Intermediate Trolley
Finish : Galvanised Steel / Aluminium



2.307(180)-PL120-2 End Anchor
Finish : Galvanised Steel / Aluminium

TYPICAL APPLICATION

Towing lines

For long installations or curved systems towing lines must be incorporated between trolleys.

Trolleys

Maximum trolley loading 16/30Kg
Cable clip capacity 58 x 20mm & 100 x 30mm
Maximum distance between trolleys on curves 60°

Curves

Minimum radius for curves 1000mm

Aggressive atmospheres

Epoxy coated trolley are available on request

