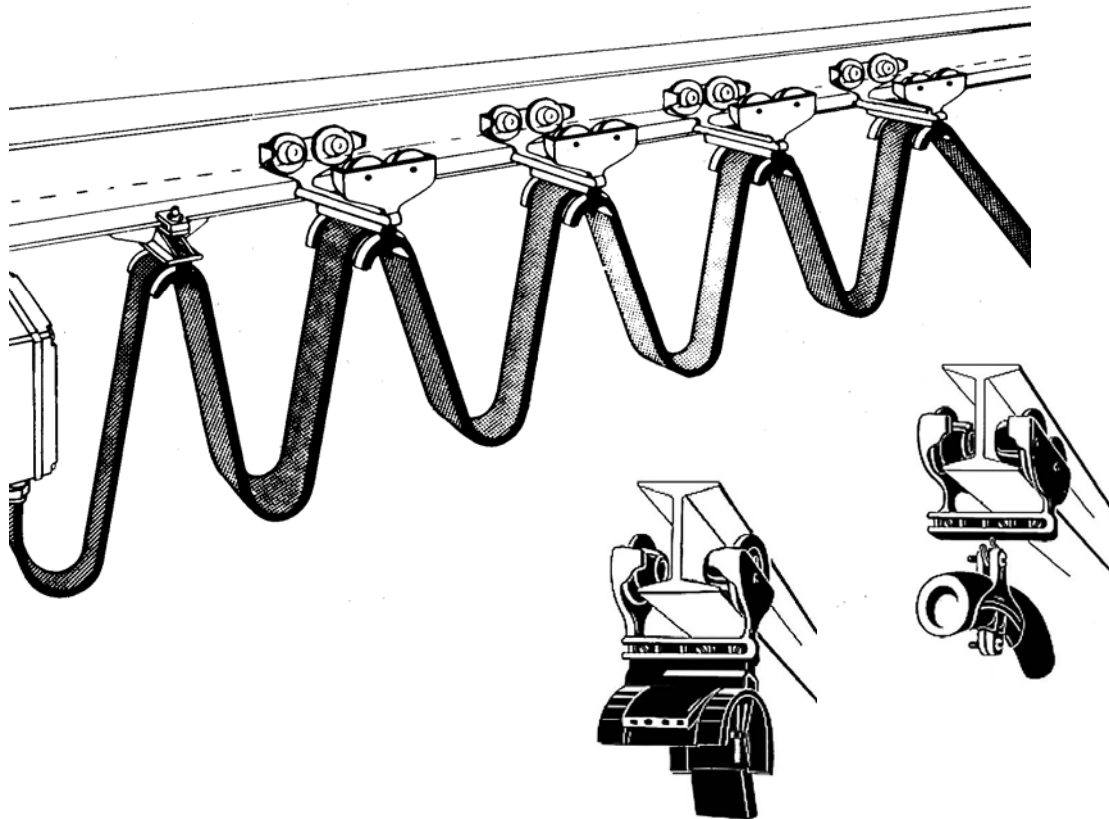


**Light / Medium Duty RSJ Festoon Cable Systems**

RSJ Festoon trolleys can run along the same beam as the hoist, making installation fast and easy. Trolleys are available for platform cables, round cables and hoses.

Trolley capacities range from 15kg up to 60kg

**Light Duty Trolleys :-**

4 Wheel (Nylon) - Capacity 25kg / trolley

**Medium Duty Trolleys :-**

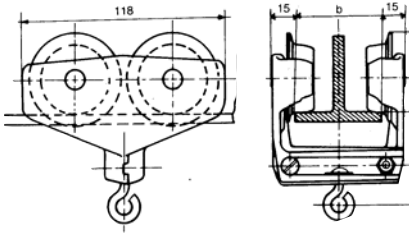
4 Wheel (Nylon) - Capacity 30kg / trolley

4 Wheel (Steel) - Capacity 60kg / trolley

## ADJUSTABLE RSJ TROLLEYS

### STANDARD TROLLEYS

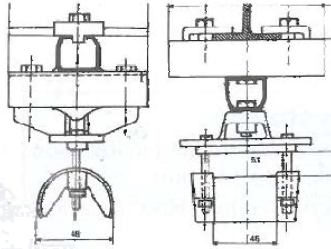
4 Wheel trolley for use with flat or round cable or hoses (add cable clips to suit)



Code	Capacity	RSJ Flange
25/30-23	25kg	48-140mm

### END ANCHORS

For use with flat or round cable or hoses (add cable clips to suit)



Code	Capacity	RSJ Flange
2110-140-23	25kg	48-140mm

### FLAT CABLE CLIPS



Code	Capacity	Radius
7528/4263	51x30mm	24mm
7528/7544	75x30mm	22mm

### ROUND CABLE / HOSECLIPS

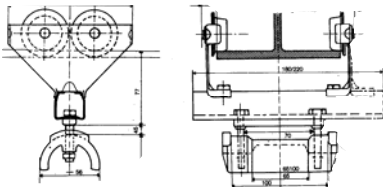


Round cable clips - max. 3 clips / trolley. Largest diameter clip must be placed at the top.

Code	Diameter	A
18.3539	35 - 39mm	62mm
18.3034	30 - 34mm	56mm
18.2529	25 - 29mm	51mm
18.2024	20 - 24mm	43mm
15.1519	15 - 19mm	38mm
15.1014	10 - 14mm	33mm
15.0608	6 - 8mm	33mm

## ADJUSTABLE RSJ TROLLEYS FOR FLAT CABLES

### STANDARD TROLLEYS



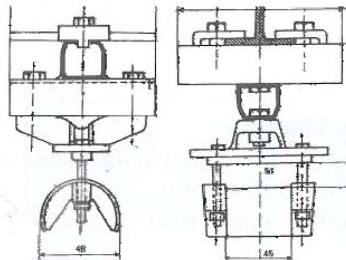
**30kg Trolley**  
Steel body, nylon wheels, nylon cable clip.

<b>Code</b>	30/132-65100
<b>Capacity</b>	30kg
<b>Max cable size</b>	65 x 40mm
<b>RSJ Flange width</b>	50 - 135mm

**60kg Trolley**  
Double steel body, steel wheels with ball bearing races, steel cable clip.

<b>Code</b>	60/132-100100
<b>Capacity</b>	60kg
<b>Max cable size</b>	100 x 50mm
<b>RSJ Flange width</b>	50 - 91mm

### END ANCHORS



**30kg Anchor**  
Steel body, nylon cable clip.

<b>Code</b>	30/200-65100
<b>Capacity</b>	30kg
<b>Max cable size</b>	65 x 40mm
<b>RSJ Flange width</b>	50 - 135mm

**60kg Anchor**  
Steel body, steel cable clip.

<b>Code</b>	60/200-100100
<b>Capacity</b>	60kg
<b>Max cable size</b>	100 x 50mm
<b>RSJ Flange width</b>	50 - 91mm