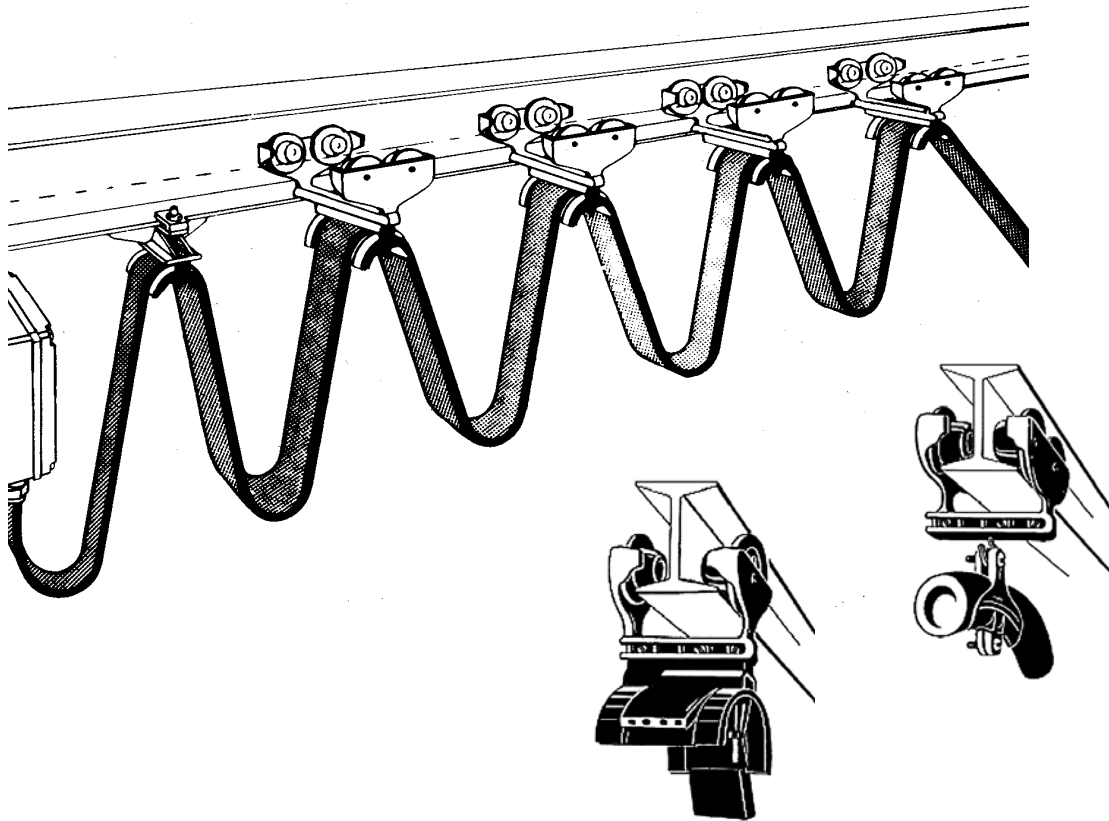


Light / Medium Duty RSJ Festoon Cable Systems

RSJ Festoon trolleys can run along the same beam as the hoist, making installation fast and easy. Trolleys are available for flatform cables, round cables and hoses.

Trolley capacities range from 15kg up to 60kg



Light Duty Trolleys :-

4 Wheel (Nylon) - Capacity 25kg / trolley

Medium Duty Trolleys :-

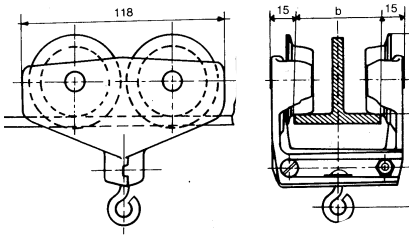
4 Wheel (Nylon) - Capacity 30kg / trolley

4 Wheel (Steel) - Capacity 60kg / trolley

ADJUSTABLE RSJ TROLLEYS

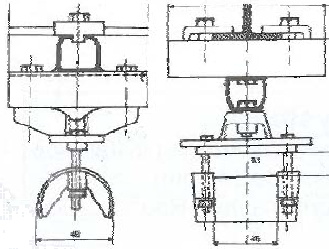
STANDARD TROLLEYS

4 Wheel trolley for use with flat or round cable or hoses (add cable clips)



END ANCHORS

For use with flat or round cable or hoses (add cable clips to suit)



FLAT CABLE CLIPS

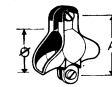


Code	Capacity	Radius
7528/4263	51x30mm	24mm
7528/7544	75x30mm	22mm

Code	Capacity	RSJ Flange
25/20-23	20kg	48 - 88mm
25/30-23	25kg	48-140mm

Code	Capacity	RSJ Flange
2110-140-23	25kg	48-140mm

ROUND CABLE / HOSECLIPS

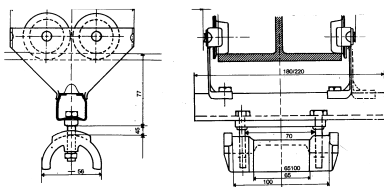


Round cable clips - max. 3 clips / trolley. Largest diameter clip must be placed at the top.

Code	Diameter	A
18.3539	35 - 39mm	62mm
18.3034	30 - 34mm	56mm
18.2529	25 - 29mm	51mm
18.2024	20 - 24mm	43mm
15.1519	15 - 19mm	38mm
15.1014	10 - 14mm	33mm
15.0608	6 - 8mm	33mm

ADJUSTABLE RSJ TROLLEYS FOR FLAT CABLES

STANDARD TROLLEYS



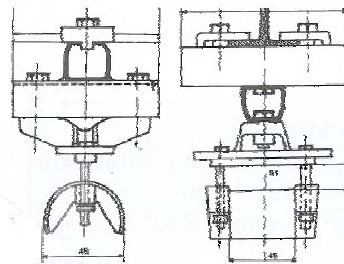
30kg Trolley
Steel body, nylon wheels, nylon cable clip.

Code	30/132-65100
Capacity	30kg
Max cable size	65 x 40mm
RSJ Flange width	50 - 135mm

60kg Trolley
Double steel body, steel wheels with ball bearing races, steel cable clip.

Code	60/132-100100
Capacity	60kg
Max cable size	100 x 50mm
RSJ Flange width	50 - 91mm

END ANCHORS



30kg Anchor
Steel body, nylon cable clip.

Code	30/200-65100
Capacity	30kg
Max cable size	65 x 40mm
RSJ Flange width	50 - 135mm

60kg Anchor
Steel body, steel cable clip.

Code	60/200-100100
Capacity	60kg
Max cable size	100 x 50mm
RSJ Flange width	50 - 91mm